

Before you begin

- Before the product is installed, please read the operation manual carefully.
- Please unpack all boxes carefully and identify that all the parts are present.
- Make sure you use only the recommended power supplies. Damage caused to the camera or receiver by incorrect voltage or wiring is not covered by the warranty.
- Cutting any cable will void the warranty.
- Do not drop, pierce or dismantle the camera.

Index

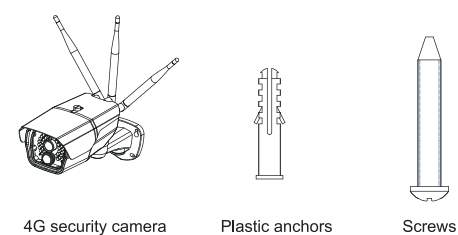
- KEY FEATURES 1
- PACKING CONTENTS 2
- APPEARANCE ILLUSTRATION 4
- GET POWER SUPPLY 5
- APP INSTALLATION & OPERATIONS 6
- RESET THE DEVICE 11
- MAIN SPECIFICATIONS 12

1. Key features

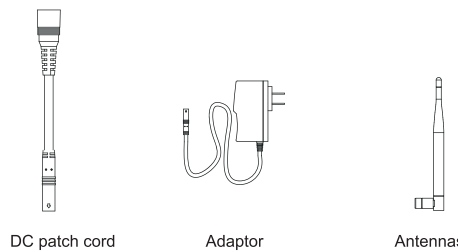
- Wi-Fi + 4G connection
- 2.0 Mega pixel HD (1080p)
- IP65 weatherproof
- Day/Night surveillance mode
- Motion detection alarm
- 30 days free Cloud storage
- Solar powered

1

2. Packing Contents

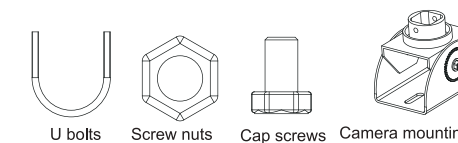


4G security camera Plastic anchors Screws



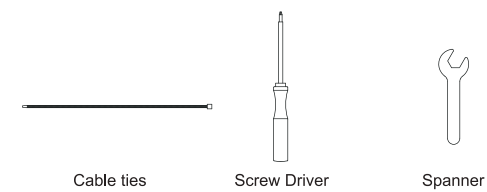
DC patch cord Adaptor Antennas

----- Optional -----

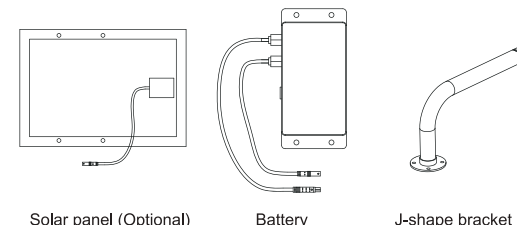


U bolts Screw nuts Cap screws Camera mounting bracket

2



Cable ties Screw Driver Spanner



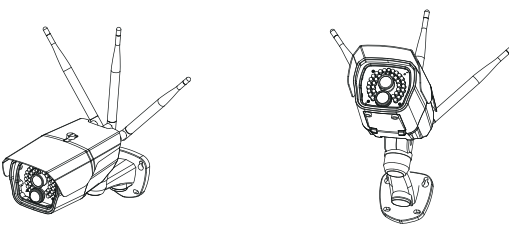
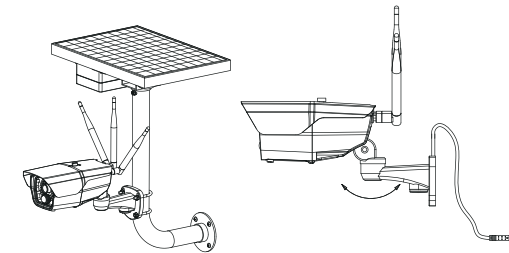
Solar panel (Optional) Battery J-shape bracket



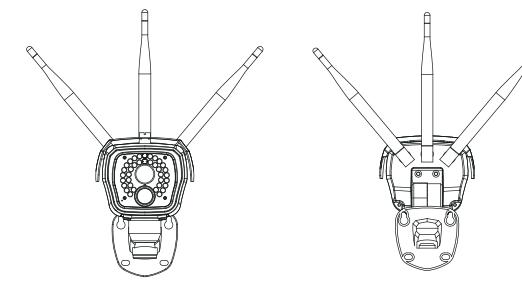
Solar panel mounting plate Battery mounting plate

3

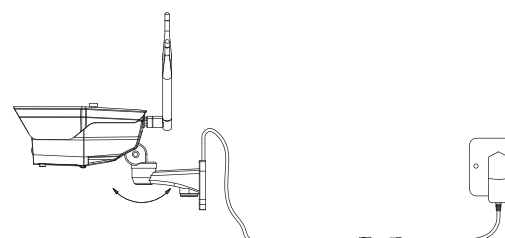
3. Appearance Illustration



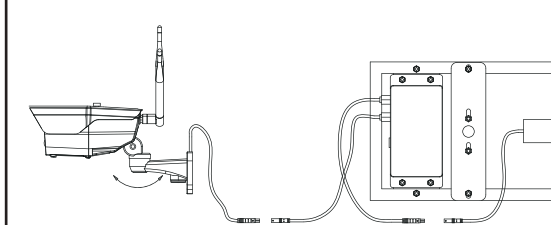
4



4. Get power supply

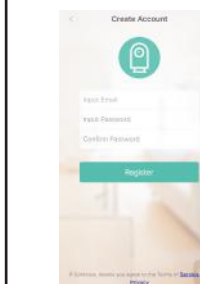


5



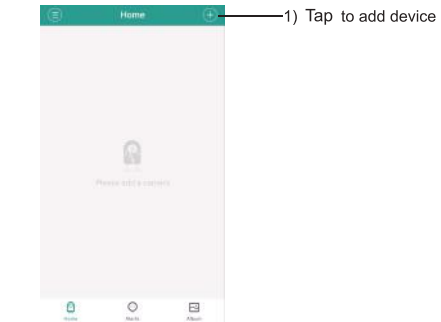
5. App Installation & Operations

- Install Application
Search for "Tycam" in Google Play or App store. Open the App on your Android or iOS device, the In-App instructions will walk you through how to connect the device to your phone.
- Create an account
Tap Register
Input email and password
Please validate the account in your email and return to login.

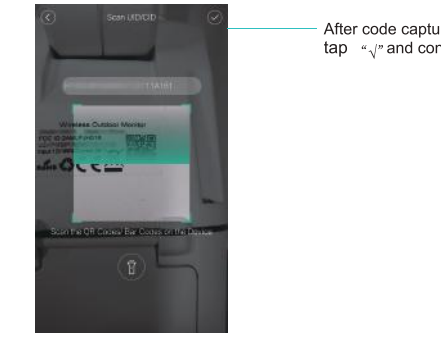


6

3. Add camera

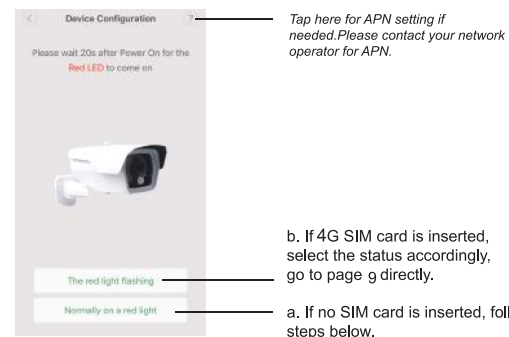


2) Scan QR code or input UID



7

4. Choose Mode a) Wi-Fi Mode b) 4G Mode

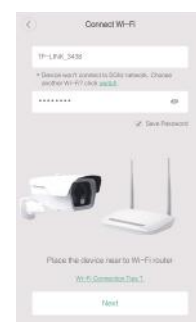


Tap here for APN setting if needed. Please contact your network operator for APN.

b. If 4G SIM card is inserted, select the status accordingly, go to page g directly.

a. If no SIM card is inserted, follow steps below.

1) Add local wifi



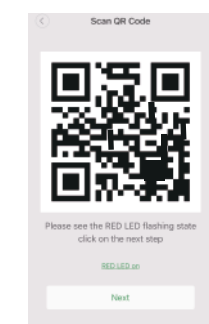
* Red LED flashes quickly while device is searching for wifi connection.

8

2) Tap "Ready for next step" to get the QR code



3) Face the phone screen to the camera



9

4) Binding Camera



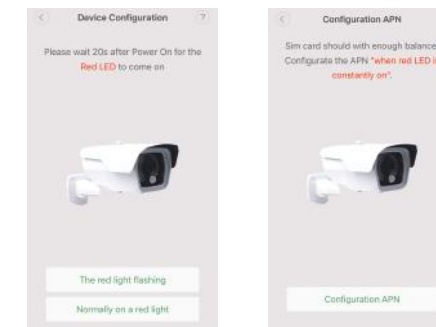
* Red LED flashes slowly when connection is successful.

5) Binding successful, you can start using



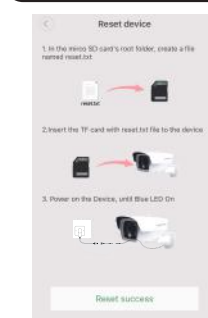
10

4G Mode:



* Tap "Red LED flash" when Red LED is flashing.

6. Reset the device



11

7. Main Specifications

Frequency	4G LTE FDD:B1 B2 B3 B4 B5 TDD:B38 B39 B40 B41 GSM: 850/900/1800/1900MHZ WCDMA:850/900/1900/2100 MHZ
Image sensor	2 Megapixel CMOS sensor
Image resolution	HD 1080P(1920*1080), 864*480
Camera lens	F6 aperture; 85° wide angle
Video compression standard	H.264
Infrared LED	35 ̢5
Connection	Wi-Fi (IEEE802.11b/g/n); 4G (FDD-LTE/TDD-LTE); 3G(WCDMA)
Memory	EMMC+DDR3: 8GB+1GB
Micro SD	Max 64GB FAT32
Mobile APP	iOS/Android
Power input	12V/2A
Net weight	968g
Dimensions	275*106mm

12

TECHNICAL SUPPORT:

For Technical Support please contact your local distributor.

LIMITED WARRANTY:

This product is supplied with a 1 Year warranty. The Warranty excludes products that have been misused, (including accidental damage) and damage caused by normal wear and tear. In the unlikely event that you encounter a problem with this product, it should be returned to the place of purchase.

4G Outdoor Security Camera

User Manual V1.0



Please first verify that all contents received are complete according to the Package Contents listed below. Prior to installation of this equipment, please carefully read all operation and installation instructions, and operate according to these instructions.

13

尺寸: 80x120mm
材质: 80g书纸
风琴折